

# 1 2,500 SF FORMER GEORGIAN SCHOOL GYM ZONED COMMERCIAL

- Formerly Classroom and Gym space for The Georgia School (also available for sale)
- Contains 7,500 sq ft of high ceiling gym or warehouse space and 5,000 sq ft of classroom or office space
- Includes a commercial kitchen with gas range, oven, fire suppression and sinks
- Includes parking lot along the side and rear of the building with an entrance from Sale Barn Drive.
- The structure is 10 years old and has working fire alarm, fire suppression and HVAC system

**Prism Drive  
Carrollton, GA 30117**

FOR A FAX-ON-DEMAND INFORMATION PACKAGE WITH SURVEY, CALL  
**1-877-568-4636 EXT 404**



**\$600,000**

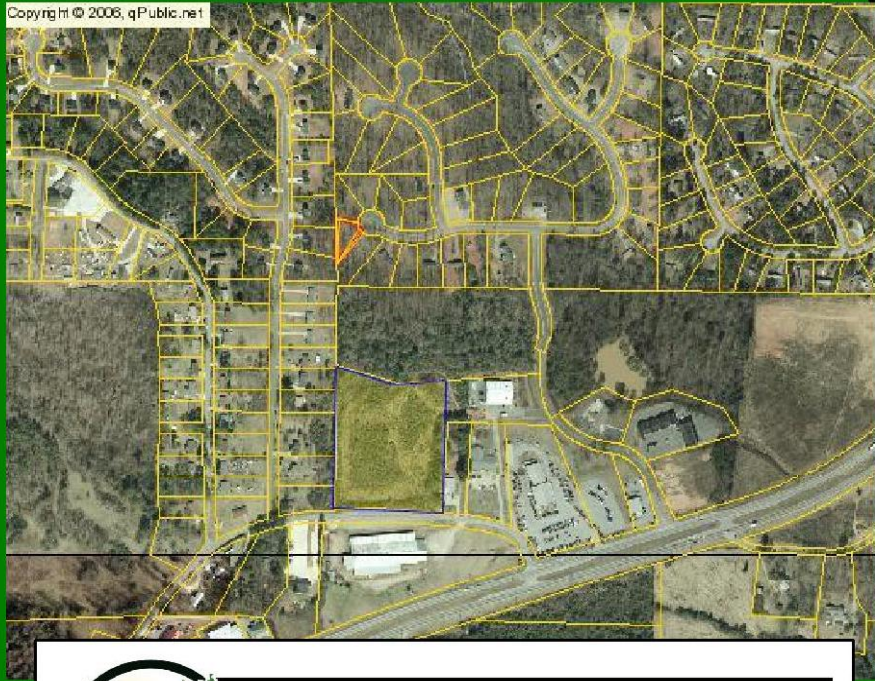
LOOPNET: 15043003  
<http://listing.loopnet.com/15043003>

## **LOCATION:**

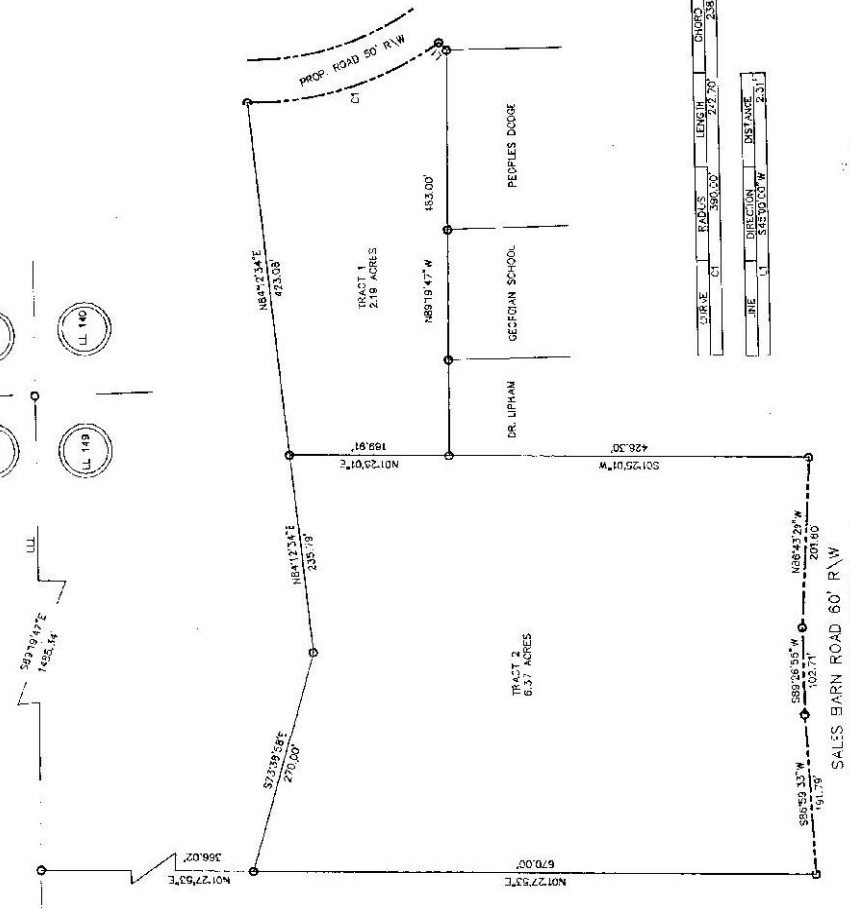
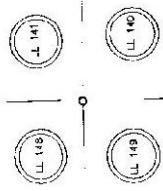
**From Atlanta, take I-20 west to Exit 24. Turn left heading south on hwy 61 for 9 miles to right on Prism Dr Property on right.**

**MIKE FITZGERALD, LAND AGENT  
TEL (404) 603-5460  
FAX (404) 603-5469  
MIKE@FITZGERALDLAND.COM  
WWW.FITZGERALDLAND.COM**

Copyright © 2006, qPublic.net



**FITZGERALD LAND  
& COMMERCIAL REALTY**

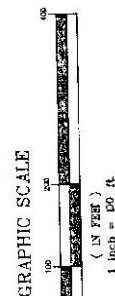


CURVE	CHORD	LENGTH	BEARING
C1	584.00	272.70	$S18^{\circ}33'55''E$

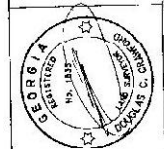
  

LINE	SUBSTANTIAL	DISTANCE
1	1	2.31

57/45  
 PROPERTY SURVEY FOR  
 THE GEORGIAN SCHOOL AND PRISM PROPERTIES  
 LOCATED IN LL 149 5TH DISTRICT  
 CARROLL COUNTY, GEORGIA  
 SCALE: 1" = 60' DATE: 5-30-95  
 JNB50305



**Crawford & Associates, Inc.**  
 ENGINEERING, LAND SURVEYING & LAND PLANNING  
 15 CRAWFORD BLVD.  
 CARROLLTON, GA 30117  
 (770) 244-8974  
 FAX (770) 638-3312



I, M. J. SIMON, WAS A CORRECT REPRESENTATION OF THE LAND PLAT TO THE PROPERTY WITH THE NEARLY STRAIGHT AND SCATTERED TO THE...  
 ON THESE PLATS DRAWN BY SIMON

6. THE CONTRACTOR OF THIS PLAT... THE PERFORMANCE OF THE JOB... THE CONTRACTOR HAS BEEN ADVISED... THE CONTRACTOR HAS BEEN ADVISED... THE CONTRACTOR HAS BEEN ADVISED...

**GENERAL NOTES**  
 4. NO WARRANTY OR GUARANTEE AS TO THE ACCURACY OF THIS PLAT... THE CONTRACTOR HAS BEEN ADVISED... THE CONTRACTOR HAS BEEN ADVISED...

**CLOSURE**  
 THE FIELD DATA FROM THIS SURVEY... THE CONTRACTOR HAS BEEN ADVISED... THE CONTRACTOR HAS BEEN ADVISED...