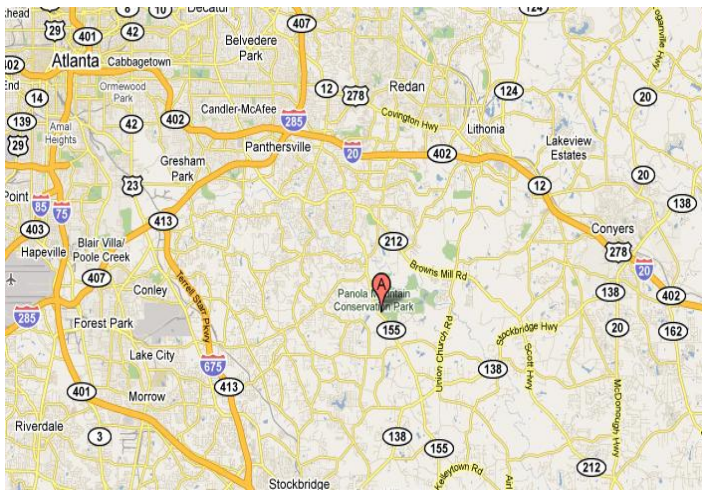
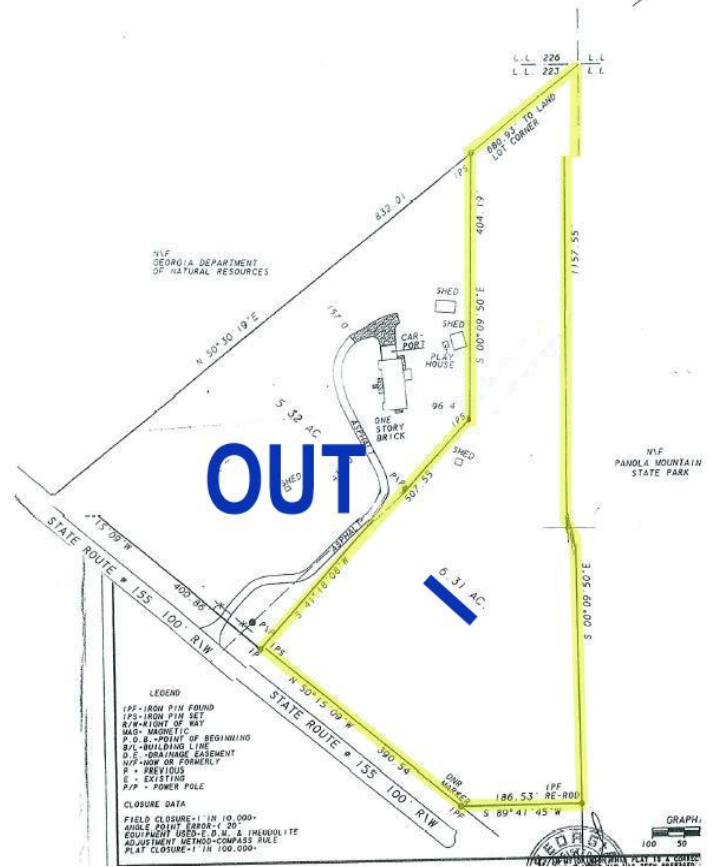


SURROUNDED BY PARK LAND

6.3 Acres Adjacent to Panola Mountain State Park

Download Full Information at: <http://www.fitzgeraldland.com/detail.php?fatherID=36&TypeID=50&ListingID=73>



Very Rare – 6.3 +/- Acres surrounded by Panola Mountain State Park. Beautiful setting with large estate sized land lots all around. Granite outcroppings create dramatic landscape features. Park entrance only steps away. 390' feet of street frontage on Snapfinger Rd (Hwy 155). Great location for a private retreat only 25 minutes to downtown.

LOCATION

2370 Hwy 155
Stockbridge, GA 30281

From Atlanta, Take I-20 East to Exit 68 and turn right on Wesley Chapel Rd. First Left on Snapfinger Rd travel 6.5 miles to property on left.

For Recorded Message & Fax Information on Demand
Call Toll-Free: 1-877-568-4636 Ext 840



Mike Fitzgerald, Broker
404-603-5460 Ext 1
Mike@MikeFitzgeraldRealty.com

