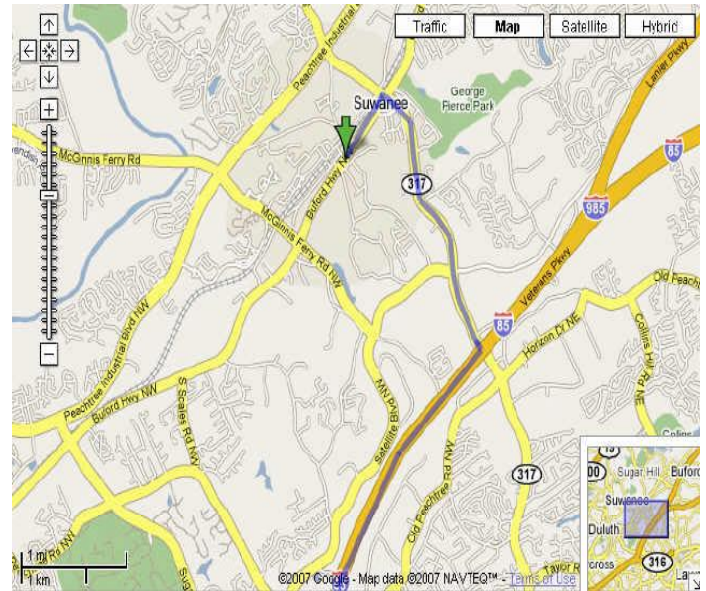


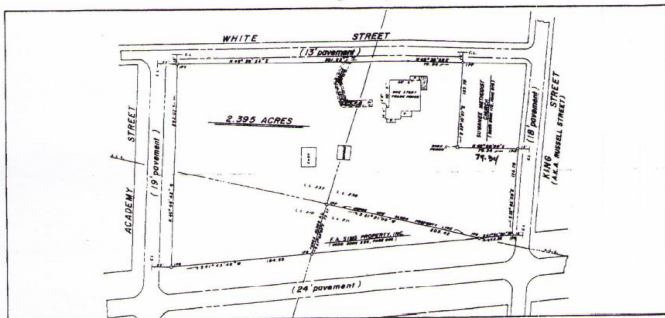
FOR SALE

POTENTIAL MULTI-FAMILY / RETAIL / MIXED USE IN OLD TOWN SUWANE

Download Full Information at: <http://www.fitzgeraldland.com/detail.php?fatherID=46&ListingID=5&TypeID=50>



Buford Highway Site



Buford Highway at Russell Street
Suwanee, Georgia

2.6 +/- Ac on entire city block @ the gateway to Old Town Suwanee on Buford Hwy just south of successful Suwanee Town Center Mixed Use dev. New zoning overlay allows for Zero lot line development, mixed use, & multi-family housing. Townhomes or stack flats with office/retail allowed.

LOCATION

**Russell St and Buford Hwy
Suwanee, GA 30024**

From ATL, take 1-85 North to left on Lawrenceville Suwanee Rd at Exit 111. Then left on Buford Hwy to property at Russell Street.

For Recorded Message & Fax Information on Demand
Call Toll-Free: 1-877-568-4636 Ext 404



Mike Fitzgerald, Broker
404-603-5460 Ext 1
Mike@MikeFitzgeraldRealty.c

